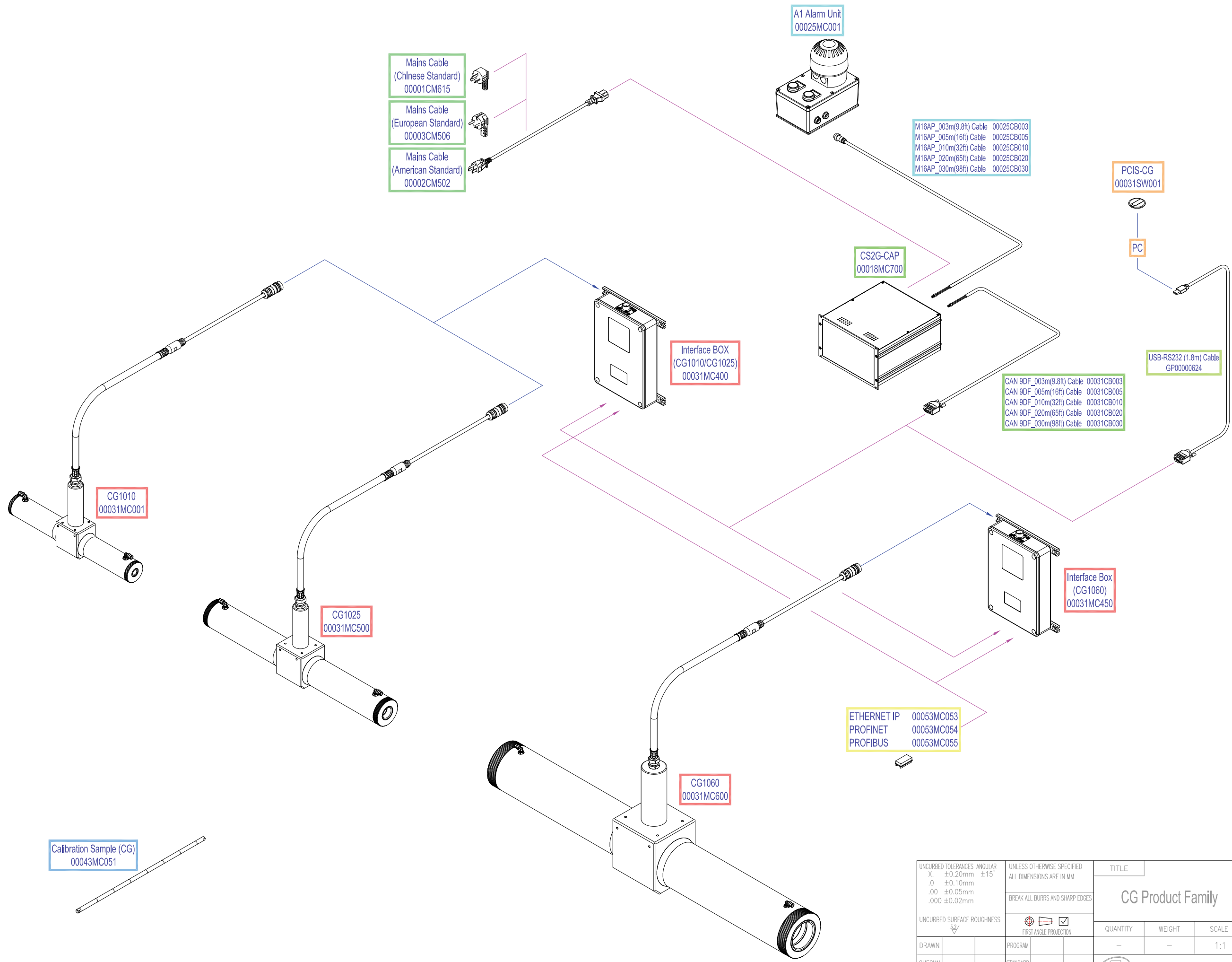


- Gauge Head
- Communications
- Display
- Controllers
- Power
- Alarm & Report
- Accessories



UNCURBED TOLERANCES: ANGULAR X. ±0.20mm ±15' .0 ±0.10mm .00 ±0.05mm .000 ±0.02mm		UNLESS OTHERWISE SPECIFIED ALL DIMENSIONS ARE IN MM BREAK ALL BURRS AND SHARP EDGES		TITLE <b>CG Product Family</b>		DRAWING No. 00031SD001	
UNCURBED SURFACE ROUGHNESS 				QUANTITY -		MATERIAL -	
DRAWN CHECKN AUDIT		PROGRAM STANDARD APPROVED		WEIGHT -		SCALE 1:1	
Proton Products International				ASSEMBLY No. -		ISSUE 1.6 REC.DOC SHEET 1 OF 1 A2	